



## Why Do It?

(Policies, Research)



## See For Yourself

(Video, PowerPoint)



## Find It Online

(Web Resources)



## Wisconsin

(Local contacts, Resources)

# Home Visitor Safety Landing Pad



The resources provided here are meant for anyone who does home visits as part of their professional position. When utilizing resources provided here it is important to remember the context in which they will be used. Safety considerations may vary from location to location as well as from situation to situation. For example, safety issues in rural areas may differ somewhat from safety issued in urban areas. Because each community is unique, the safety issues encountered in that community may also be unique. With regard to safety issues, there are other factors, in addition to context, that may need to be considered. Those factors include agency policies and procedures as well as current state laws. A comprehensive set of safety measures will allow staff to be more effective in their work with families.

This landing pad highlights research, policies, and position statements (Why Do It?), videos and DVDs (See for Yourself), and Web resources (Find It Online) to support those efforts. Featured resources are high-quality, readily available, and no-cost or low-cost. A special Wisconsin section features Web sites, organizations, and other state-specific resources.

If you have recommendations for changes/additions to this resource please email them to [btepper@cesa9.org](mailto:btepper@cesa9.org)



## Why Do It?

(Policies, Research)



## See For Yourself

(Video, PowerPoint)



## Find It Online

(Web Resources)



## Wisconsin

(Local contacts, Resources)

# Why Do It?



Home visiting is an evidence based practice and is being used by many programs working with children and families. To serve children and families we must first remain safe. Throughout our nation many policies, procedures and resources have been developed to increase home visitor safety. It is estimated that 50-80% of public human services workers have experienced threats, damaged properties and physical attacks during their career. This landing pad is meant to provide proactive steps which can be taken for the safety of those who will be doing home visiting in Wisconsin.



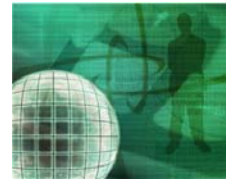
## Why Do It?

(Policies, Research)



## See For Yourself

(Video, PowerPoint)



## Find It Online

(Web Resources)



## Wisconsin

(Local contacts, Resources)

# See For Yourself



Oklahoma: The video training is split into 7 segments. The segments are:

[Segment 1 - General Safety Guidelines](#)

[Segment 2 - Family Assessment](#)

[Segment 3 - Domestic Violence](#)

[Segment 4 - Mental Health](#)

[Segment 5 - Gangs and Firearms](#)

[Segment 6 - Meth](#)

[Segment 7 - Child Abuse and Neglect Reporting](#)



## Why Do It?

(Policies, Research)



## See For Yourself

(Video, PowerPoint)



## Find It Online

(Web Resources)



## Wisconsin

(Local contacts, Resources)

# Find It Online



### Documents:

- Sample letter regarding cold and flu season: [Sample Letter Regarding Cold and Flu Season](#)
- Safety Guideline Manual: <http://friendsnrc.org/cbcap-priority-areas/home-visitation/oklahoma-home-visitor-training>
- Head Start: [http://eclkc.ohs.acf.hhs.gov/hslc/tta-system/health/Mental%20Health/Program%20Planning,%20Design%20&%20Management/Staff%20Support/famcom\\_fts\\_009546\\_091705.html](http://eclkc.ohs.acf.hhs.gov/hslc/tta-system/health/Mental%20Health/Program%20Planning,%20Design%20&%20Management/Staff%20Support/famcom_fts_009546_091705.html)
- Home Visitor Safety Tips: [Safety Tips](#)
- Minneapolis: [Personal Safety for Visiting Professionals](#)
- Middleton-Cross Plains School District: [Sample Letter Regarding Cold and Flu Season](#)
- Appleton School District: [Home Visitor Guidelines](#)

### Policies and Procedures:

- Indiana: [http://www.in.gov/dcs/files/Home\\_Visit\\_Safety\\_Protocol.pdf](http://www.in.gov/dcs/files/Home_Visit_Safety_Protocol.pdf)
- North Carolina: [http://www.ncoes.net/Policies/home\\_visitation\\_safety%20.pdf](http://www.ncoes.net/Policies/home_visitation_safety%20.pdf)
- Madison: <https://stusvcweb.madison.k12.wi.us/files/stusvc/Home%20Visits%20-%20Best%20Practices.doc>
- University of Wisconsin-Milwaukee: <https://www4.uwm.edu/mcwp/resources/home-visitor-safety-and-self-care.cfm>
- Dane County Policy and Incident report

### PowerPoint Presentations:

- Appleton School District: [Home Visitor Training](#)
- Appleton School District: [Home Visitor Safety](#)



**Why Do It?**  
(Policies, Research)



**See For Yourself**  
(Video, PowerPoint)



**Find It Online**  
(Web Resources)



**Wisconsin**  
(Local contacts, Resources)

## Wisconsin Resources



### **Wisconsin Contacts:**

Head Start: Wendi Bowe - [wbowe@etas.stginternational.com](mailto:wbowe@etas.stginternational.com)

UW Extension: Staci Sontoski - [staci.sontoski@ces.uwex.edu](mailto:staci.sontoski@ces.uwex.edu)

Waisman Center: Elizabeth Wahl - [wahl@waisman.wisc.edu](mailto:wahl@waisman.wisc.edu)

### **Organizations that may do home visiting:**

Birth to 3

Parents as Partners - Pence Rivington, [pence.rivington@uwex.edu](mailto:pence.rivington@uwex.edu)

Home Medical Organizations (Visiting Nurses, etc)

Head Start

City or County Police

Family Resource Centers